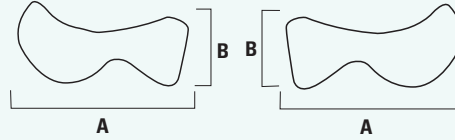


MEDPOR® Biomaterial Mittelgesichtsimplantate

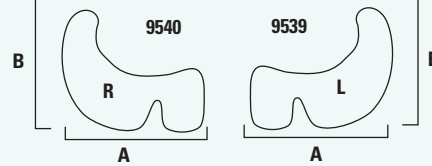
Porex Surgicals Produktlinie für das Mittelgesicht aus MEDPOR Biomaterial

INFERIORER ORBITARAND



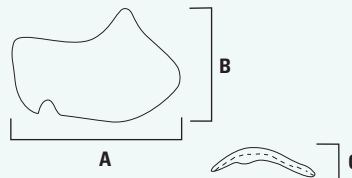
KAT#	BESCHREIBUNG	A	B
9429	Inferior Orbital Rim - Links	43mm	x 18mm
9430	Inferior Orbital Rim - Rechts	43mm	x 18mm

ORBITARAND-IMPLANTATE, EXTENDED (ERWEITERT)



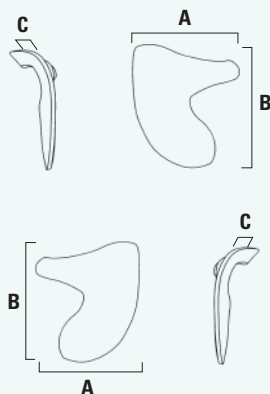
KAT#	BESCHREIBUNG	A	B
9539	Orbital Rim - Extended Links	47mm	x 40mm
9540	Orbital Rim - Extended Rechts	47mm	x 40mm

MIDFACE CONTOUR IMPLANTAT



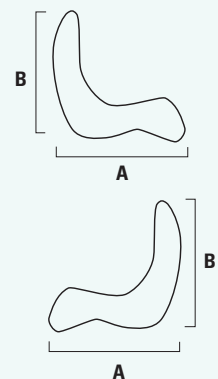
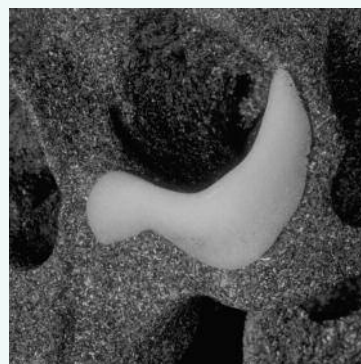
KAT#	BESCHREIBUNG	A	B	C
83007	Midface Contour Implant - Links	60mm	x 40mm	x 4mm
83008	Midface Contour Implant - Rechts	60mm	x 40mm	x 4mm

INFERIORES MEDIALES ORBITARANDIMPLANTAT (IMORI™)



KAT#	BESCHREIBUNG	A	B	C
87003	IMORI - Links	25mm	x 26mm	x 3mm
87004	IMORI - Rechts	25mm	x 26mm	x 3mm

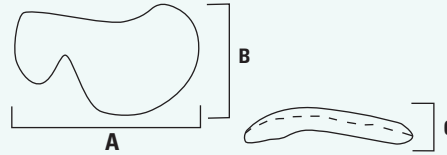
ONLAYIMPLANTAT FÜR DEN ORBITARAND



KAT#	BESCHREIBUNG	A	B
81001	Orbital Rim Onlay - Links	40mm	x 40mm
81002	Orbital Rim Onlay - Rechts	40mm	x 40mm

MITTELGESICHTSIMPLANTATE

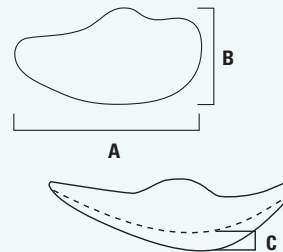
MIDFACE RIM



KAT#	BESCHREIBUNG	A	B	C
83003	Midface Rim - Links	47mm	x 28mm	x 3mm
83004	Midface Rim - Rechts	47mm	x 28mm	x 3mm



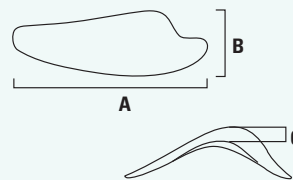
ERWEITERTE JOCHBEINFORMEN



KAT#	BESCHREIBUNG	A	B	C
9513	Small Ext Contoured - Links	45mm	x 24mm	x 3mm
9514	Small Ext Contoured - Rechts	45mm	x 24mm	x 3mm
9515	Medium Ext Contoured - Links	50mm	x 26mm	x 4mm
9516	Medium Ext Contoured - Rechts	50mm	x 26mm	x 4mm
9517	Large Ext Contoured - Links	55mm	x 27mm	x 5mm
9518	Large Ext Contoured - Rechts	55mm	x 27mm	x 5mm
9952	Ext Contoured Malar Sizer Set (Silikon, unsteril)			



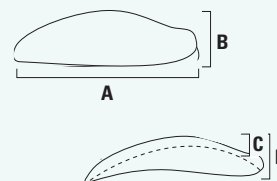
DESIGN RZ JOCHBEIN-IMPLANTATE



KAT#	BESCHREIBUNG	A	B	C
9501	Super Petite, Design RZ - Links	50mm	x 19mm	x 3mm
9502	Super Petite, Design RZ - Rechts	50mm	x 19mm	x 3mm
9503	Petite, Design RZ - Links	50mm	x 19mm	x 5mm
9504	Petite, Design RZ - Rechts	50mm	x 19mm	x 5mm
9950	Design RZ Malar Sizer Set (Silikon, unsteril)			



DESIGN M JOCHBEIN-IMPLANTATE



KAT#	BESCHREIBUNG	A	B	C	D
9507	Small Design M - Links	64mm	x 19mm	x 3mm	x 15mm
9508	Small Design M - Rechts	64mm	x 19mm	x 3mm	x 15mm
9509	Med. Design M - Links	64mm	x 19mm	x 4.5mm	x 17mm
9510	Med. Design M - Rechts	64mm	x 19mm	x 4.5mm	x 17mm
9511	Large Design M - Links	64mm	x 19mm	x 7mm	x 19mm
9512	Large Design M - Rechts	64mm	x 19mm	x 7mm	x 19mm
9951	Design M Malar Sizer Set (Silikon, unsteril)				

POREX

SURGICAL PRODUCTS GROUP

Porex Surgical, Inc.
15 Dart Road, Newnan, GA 30265-1017 USA
1-678-479-1610 • FAX 1-678-423-1435

MEDPOR ist ein eingetragenes Warenzeichen und IMORI ein Warenzeichen der Porex Surgical Inc.
Die Porex Surgical Dienstleistungsmarke ist im Besitz und steht unter Lizenz und Befugnis der Porex Corporation.

SPG-1747-091007-01

Porex Surgical GmbH
Lindwurmstr 101, D-80337 München
+49 (0)89 232415-0 • FAX +49 (0)89-23241515
www.porexurgical.de

www.porexurgical.com

Um eine komplette Liste aller vorgefertigten ästhetischen und rekonstruktiven MEDPOR-Implantate zu erhalten, wenden Sie sich bitte an die Porex Surgical GmbH.
E-mail: surgical.info@porex.com