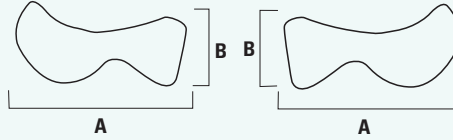


MEDPOR® Biomaterial Midface Implants

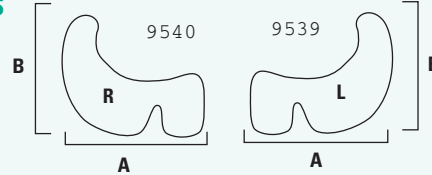
Porex Surgical's Midface Product line made with MEDPOR Biomaterial

INFERIOR ORBITAL RIM



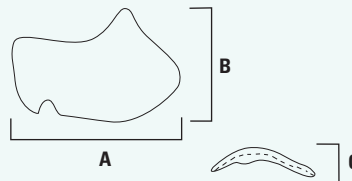
CAT#	DESCRIPTION	A	B
9429	Inferior Orbital Rim - Left	43mm	18mm
9430	Inferior Orbital Rim - Right	43mm	18mm

EXTENDED ORBITAL RIM IMPLANTS



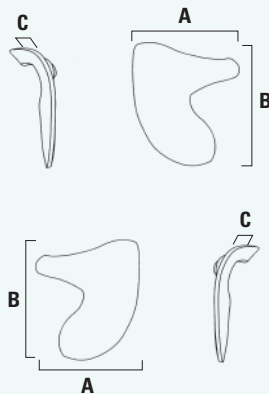
CAT#	DESCRIPTION	A	B
9539	Orbital Rim - Extended Left	47mm	40mm
9540	Orbital Rim - Extended Right	47mm	40mm

MIDFACE CONTOUR IMPLANT



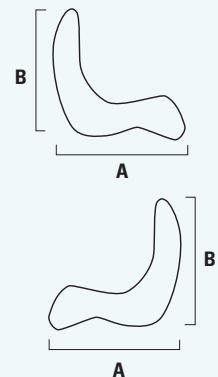
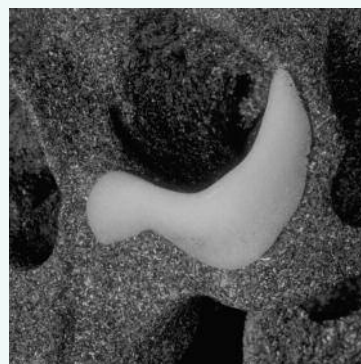
CAT#	DESCRIPTION	A	B	C
83007	Midface Contour Implant - Left	60mm	40mm	4mm
83008	Midface Contour Implant - Right	60mm	40mm	4mm

INFERIOR MEDIAL ORBITAL RIM IMPLANT (IMORI™)



CAT#	DESCRIPTION	A	B	C
87003	Inferior Medial Orbital Rim - Left	25mm	26mm	3mm
87004	Inferior Medial Orbital Rim - Right	25mm	26mm	3mm

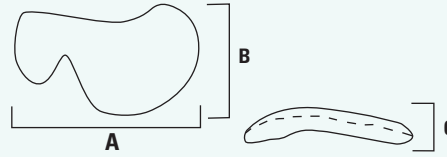
ORBITAL RIM ONLAY IMPLANTS



CAT#	DESCRIPTION	A	B
81001	Orbital Rim Onlay - Left	40mm	40mm
81002	Orbital Rim Onlay - Right	40mm	40mm

MIDFACE IMPLANTS

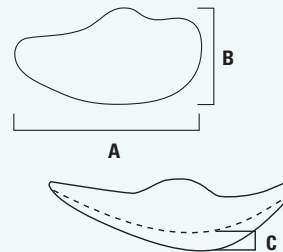
MIDFACE RIM



CAT#	DESCRIPTION	A	B	C
83003	Midface Rim - Left	47mm	x 28mm	x 3mm
83004	Midface Rim - Right	47mm	x 28mm	x 3mm



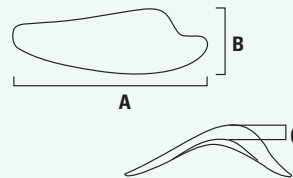
EXTENDED MALAR SHAPES



CAT#	DESCRIPTION	A	B	C
9513	Small Ext Contoured - Left	45mm	x 24mm	x 3mm
9514	Small Ext Contoured - Right	45mm	x 24mm	x 3mm
9515	Medium Ext Contoured - Left	50mm	x 26mm	x 4mm
9516	Medium Ext Contoured - Right	50mm	x 26mm	x 4mm
9517	Large Ext Contoured - Left	55mm	x 27mm	x 5mm
9518	Large Ext Contoured - Right	55mm	x 27mm	x 5mm
9952	Ext Contoured Malar Sizer Set (Silicone, Non-Sterile)			



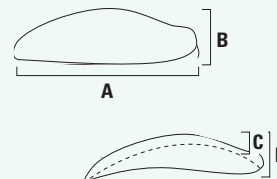
DESIGN RZ MALAR IMPLANTS



CAT#	DESCRIPTION	A	B	C
9501	Super Petite, Design RZ - Left	50mm	x 19mm	x 3mm
9502	Super Petite, Design RZ - Right	50mm	x 19mm	x 3mm
9503	Petite, Design RZ - Left	50mm	x 19mm	x 5mm
9504	Petite, Design RZ - Right	50mm	x 19mm	x 5mm
9950	Design RZ Malar Sizer Set (Silicone, Non-Sterile)			



DESIGN M MALAR IMPLANTS



CAT#	DESCRIPTION	A	B	C	D
9507	Small Design M - Left	64mm	x 19mm	x 3mm	x 15mm
9508	Small Design M - Right	64mm	x 19mm	x 3mm	x 15mm
9509	Med. Design M - Left	64mm	x 19mm	x 4.5mm	x 17mm
9510	Med. Design M - Right	64mm	x 19mm	x 4.5mm	x 17mm
9511	Large Design M - Left	64mm	x 19mm	x 7mm	x 19mm
9512	Large Design M - Right	64mm	x 19mm	x 7mm	x 19mm
9951	Design M Malar Sizer Set (Silicone, Non-Sterile)				